



Pushing Performance  
Since 1945

# preLink RJ45 plug, IP20 Cat.6A L-0°

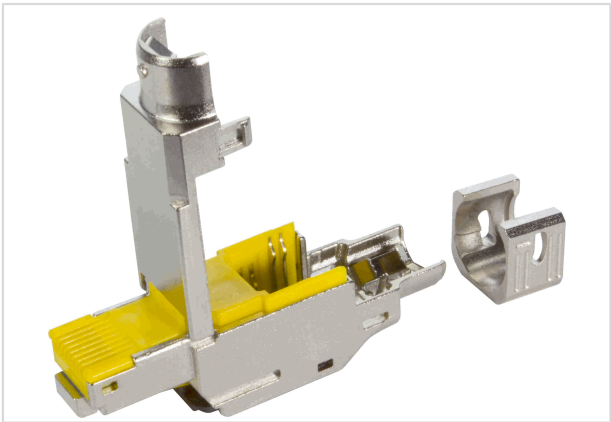


Image is for illustration purposes only. Please refer to product description.

Part number	20 82 101 0020
Specification	preLink RJ45 plug, IP20 Cat.6A L-0°
HARTING eCatalogue	<a href="https://b2b.harting.com/20821010020">https://b2b.harting.com/20821010020</a>

## Identification

Category	Connectors
Series	preLink®
Series of hoods/housings	RJ45
Element	Connector
Specification	RJ45 Straight

## Version

Termination method	preLink® IDC insulation displacement termination
Gender	Male
Shielding	Shielded
Number of contacts	8
Coding	RJ45

## Technical characteristics

Transmission characteristics	Cat. 6A Class E <sub>A</sub> up to 500 MHz
Data rate	10 Mbit/s
	100 Mbit/s
	1 Gbit/s
	2.5 Gbit/s
	5 Gbit/s
	10 Gbit/s
Limiting temperature	-40 ... +85 °C
Relative humidity	95 % Non-condensing (operation)
Mating cycles	≥750



**Pushing Performance**  
Since 1945

## Technical characteristics

Degree of protection acc. to IEC 60529 IP20

Cable diameter 5 ... 9 mm

## Material properties

Material (insert) Zinc die-cast, nickel-plated

## Specifications and approvals

Approvals DNV GL

PROFINET Yes

## Commercial data

Packaging size 1

Net weight 26.46 g

Country of origin Latvia

European customs tariff number 85366990

GTIN 5713140224209

eCl@ss 27440114 Rectangular connector (for field assembly)